

AQUAPHOR®

water filters



Water purifier **EXTRA-SOFT** Manual

LLC "Aquaboss", Russia

Content

1.	Requirements for water supply	3
2.	Specifications	3
3.	Contents of delivery:	3
4.	The device and the principle of operation	4
5.	Installation	4
6.	Starting	4
7.	Replacement of modules	6
8.	Rules of storage and transportation	6
4.	Security	6
5.	Manufacturer's warranty	8
	Troubleshooting	9
	Service maintenance of water purifier	10

The manufacturer reserves the right to make improvements to the design of the softener without adding them to the passport.

1. Introduction

The Extra-Soft water purification unit (hereinafter referred to as the water purifier) was manufactured by Aquaboss Ltd. (Russia, St. Petersburg).

The water purifier is designed for additional purification of drinking water from mechanical and colloidal particles, organic impurities, and also eliminates excessive hardness, flavour, smell and colour of water in the municipal and local water networks (artesian wells, wells, etc.), provided the requirements of this manual are met.

Water purifier materials are safe, non-toxic and do not release into water any matters, hazardous for human health and environment. The water purifier meets the hygienic requirements and requirements of TU 3697009-50056997-2010.

1. Requirements for water supply

The water purifier is designed for post-treatment and water softening, corresponding to SanPiN (СанПиН) 2.1.4.1074-01. The hardness of the water supplied should not exceed 10 °F.

2. Specifications

Overall dimensions (length x height x width):	271 x 495 x 190 mm
The pressure of the water supply system is not less than	0.1 MPa (1 at)
The pressure of water supply no more than	0.6 MPa (6 at)
Water temperature	+5 ... + 35 ° C
Maximum Performance	100 l/h
Minimum service life at water hardness 10 ° F	1.5 m ³
Weight, not more than	10 kg

3. Contents of delivery:

No.	Nomination	Quantity
1	Casing assembly (1)	1 piece
2	Modules (K5, K7):	2 pieces
3	Connecting pipes (p / m)	4
4	Tap 1/4 "	1 piece
5	Service plug	1 piece

Attention! The water purifier is not intended for use at minus temperatures.

4. The device and the principle of operation

Main parts:

- 1-Body
- 2-Preliminary treatment unit
- 3-Final treatment unit

- 1) The body of the water purifier (1)** consists of an upper plate in which two collectors are fixed to connect the exchangeable filter modules. The top plate is covered with a decorative cover, fixed with three plastic clips. The main part of the body is a replaceable tank with replaceable backfill.
- 2) The pre-filtration unit (2)** includes a plug-in filter cartridge K5.
- 3) The post-filtration module K7** is included in the final water treatment unit.

How does the water purifier work?

From the cold water supply network water enters the inlet of the water purifier and passes through the preliminary water treatment unit. Further, through a non-return valve, water enters the tank with a replaceable backfill. Softened water passes through the final water treatment unit and further to the consumer.

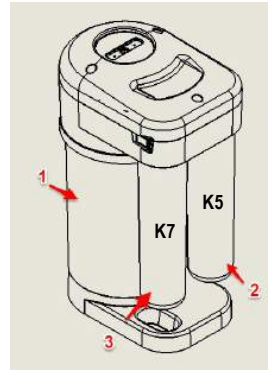


Fig. 1

5. Installation

ATTENTION! Installation of the water purifier must be carried out only by persons, authorized to carry out this type of work.

Determine the convenient location of the water purifier. In this case, pay attention to the fact that the supply tubes pass freely, without kinks and folds.

The water purifier should be installed on a flat, hard surface; be distanced or isolated from sources of heat (cookers, boilers, hot water pipes, dishwashers or washing machines, etc.).

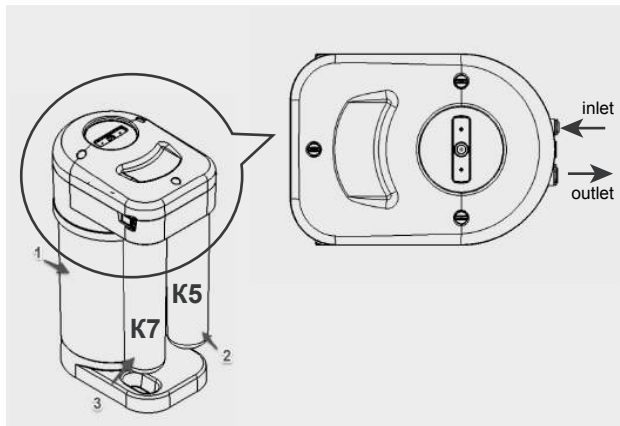


Fig. 2

6. Starting

Before using the water purifier, it is necessary to wash it. Connect the supply pipes and perform the washing procedure of the modules.

Step 1 Connect the supply pipes following the diagrams below.

Connecting the JG pipes

Pull the locking clip (2) out of the plastic bushing (1) and insert the pre-moistened end of the tube (3) into the sleeve bushing to the stop at approximately 15 mm depth and set the clip (2) in place. Check the strength of the tube fixation (3): at an effort of 8-10 kg the tube should not be pulled out.

How to disconnect the JG tubes

Pull the locking clip (2) out from under the plastic sleeve (1) and pull the tube (3) by pressing the end of the plastic sleeve. For pressing, use the wrench (4) to disconnect the pipes included in the water purifier kit.

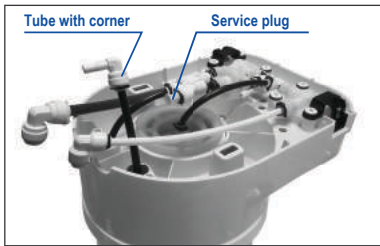


Fig. 3

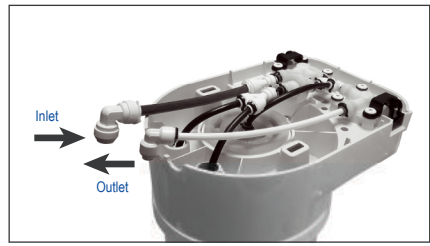
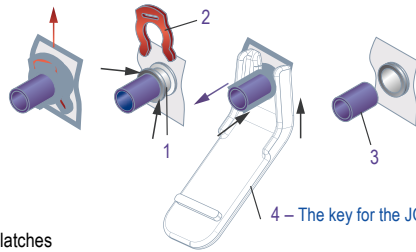
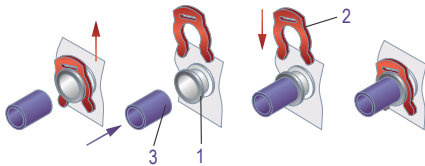


Fig. 4



Step 2 Preparing the water purifier for operation

- Remove the lid from the water purifier by turning the three latches counter-clockwise 90° (Figure 5).
- Remove the heat shrink foil from the K5 and K7 modules.
- Moisten the O-rings on the plugs of the modules under the running water.
- Install the filter modules K5 and K7 on the collectors according to Fig. 2.

Washing of the softener unit

- Set the input tap to the "Open".
- Open the water tap and wait for water to flow from it. First, air will leave the water purifier, which may give some noise.
- Wait till all air has left the tube with the corner and the water flows (service mode for air removal, see fig. 3) and close the input tap.
- Gently remove the service plug, remove the corner, install the tube in place of the service plug and put the clip (operating mode, see Fig. 4).
- Open the inlet valve again and continue the rinsing procedure.
- Let the water pass through the water purifier, until the air stops leaving the drainpipe and water flows.
- Close the input tap.
- Again let the water pass through the the water purifier in an amount from 50 to 100 litres.
- Close the tap

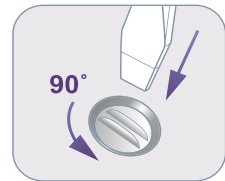


Fig. 5

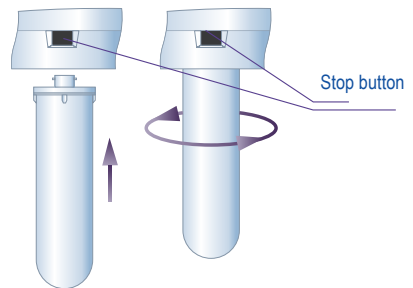


Fig. 6

ATTENTION! The water obtained during washing is not intended for drinking!

The first week of operation, check the water purifier every day for leaks. During the first week of operation of the water purifier, there may be noise associated with the release of air from the internal cavities. After a while the noise will disappear. It is not a malfunction.

7. Replacement of modules. See Fig. 6

To replace the modules K5 and K7:

- Set the input tap on the connection node to the "Closed" position and open the fresh water tap to to relieve the pressure.
- Press the stop button all the way down and while holding it, turn the filter module counter-clockwise and remove it.
- Remove the heat shrinkable film from the new module.
- Wash the module O-rings under running water.
- Insert the module into the appropriate manifold until all the way in and, gently pushing it, turn the module clockwise till it clicks.
- Set the input tap on the connection node to the "Open" position and make sure that the water purifier is sealed.

ATTENTION! Replacement and maintenance of the tank with replaceable backfilling should be done by the servicing unit.

Lifetime of the tank with replaceable backfilling depending on the hardness of the water

	Hardness, degrees	Amount of water, m3
1	1	20.9
2	2	10.5
3	3	7
4	4	5.2
5	5	4.2
6	6	3.5
7	7	3
8	8	2.6
9	9	2.3
10	10	2.1

ATTENTION! These figures are relevant for a new tank with replaceable backfill.

8. Rules of storage and transportation

Shelf life of the water purifier before the start of operation is 3 years at a temperature of + 5 to + 35 ° C, in polyethylene packaging and carton in closed rooms with natural ventilation with relative humidity not exceeding 80%. Do not tilt the water purifier, subject it to mechanical impacts and other influences.

The water purifier can be transported by all types of covered vehicles.

9. Security

The water purifier is designed for post-treatment and softening of water, corresponding to SanPiN 2.1.4.1074-01.

When installing a water purifier outside the central drinking water supply systems, it is recommended to perform an analysis of the source water for compliance with SanPiN 2.1.4.1074-01.

- If the initial water does not meet the requirements of SanPiN 2.1.4.1074-01, the service life of the pre-filtration unit and the softening unit can be highly reduced.
- If the source water differs significantly from the requirements of SanPiN 2.1.4.1074-01, it is recommended to install additional water treatment systems (iron remover, softener, disinfectant, mechanical filter, etc.).
- Do not use a system with water of unknown quality without providing additional disinfection of it.

Purified water is not subject to long-term storage. We recommend using fresh filtered water.

Use a water purifier only for cleaning water from the cold water supply system.

If you have not used the water purifier for more than 2 weeks, perform a full wash cycle according to the instructions in Section 6, "Starting up" in this manual.

ATTENTION! Do not drink the purge water (the water that was obtained as a result washing of the purifier).

Note! It is recommended use the certified persons to perform work on connecting the water purifier to the water supply network. This work should be carried out by the persons authorizes to carry out this type of work.

The manufacturer is not responsible for the inadequate quality of the connection of the water purifier to the water supply network, as well as the result of this work. Responsibility for the shortcomings of this work, as well as for causing harm to the health or property of the consumer or other persons due to these shortcomings, bears solely the performer of this work.

It is allowed to use only the taps and tubes included in the delivery set.

When transporting, storing and using the water purifier, protect it from blows and falls, from freezing of water in it. Disposal in accordance with environmental, sanitary and other requirements set by national standards in the field of environmental protection and ensuring sanitary and epidemiological welfare of the population.

10. Manufacturer's warranty

The manufacturer guarantees the compliance of the water purifier with the requirements of TU 3697-009-50056997-2010 provided the user observes the installation, operation, transportation and storage conditions specified in this manual.

The service life of the water purifier (except for replaceable filter modules)

is 5 years* from production date**. At the end of the life of the water purifier is subject to replacement. ***

Service life (life) of replaceable filter modules:

K5 - 6000 litres, but not more than 1.5 years.

K7 - 6000 litres, but not more than 1.5 years.

The tank with replaceable backfill - until the resource is exhausted.

Service life (life) of replaceable filter modules is calculated from the date of sale of the water purifier to the consumer through the retail network. The date of sale of the water purifier (with replaceable filter modules) is determined by the stamp in this manual or by a sales check. If the date of sale of the water purifier cannot be determined, the service life of the replacement modules is calculated from the date of their production.

Shelf life of the water purifier (with a set of replaceable filter modules) prior to operation - no more than 3 years at a temperature of +5 to +35 ° C, provided the packaging is intact.

Guarantee period ***** operation of the water purifier (except replaceable filter modules) - 1 year from the date of sale. The manufacturer is exempted from the warranty obligations if this manual is lost with the dates of production and / or sale fixed and there are no other ways to determine the service life of the product.

The manufacturer is discharged of liability in the following cases:

- the consumer violated the installation rules of the product described in this manual;
- the replaceable filter modules, that have exhausted the resource have not been replaced timely;
- operation of the water purifier in conditions exceeding the limits established by the technical requirements for the operating conditions of the product (see this manual).

In case there are complaints about the operation of the water purifier, contact the seller. No claim is accepted for water purifiers that have external damages.

The water purifier does not require pre-sale preparation. The price is negotiable.

* Regardless of when the product was commenced to operation.

** Date of production - date appearing in form of DD.MM.YYYY, which is indicated by the manufacturer in the label placed on the bottom of the DWM case.

*** The use of a water purifier at the end of its service life can lead to damage to the health or property of the consumer or other persons and should be terminated.

**** The period during which the manufacturer undertakes to provide the consumer with the opportunity to use the product for its intended purpose and be liable for significant shortcomings on the basis of clause 6 of Article 19 of the LAW ON PROTECTION OF CONSUMER RIGHTS IN RUSSIAN FEDERATION.

***** The period during which, if a defect is detected in the product, the manufacturer is obliged to satisfy the consumer's requirements established by Articles 18 and 29 of the LAW ON PROTECTION OF CONSUMER RIGHTS IN RUSSIAN FEDERATION.

Troubleshooting

Malfunction	Cause	Measures to be taken
There is no or not enough clean water.	The module of the preliminary water treatment unit K5 is clogged	Replace the module of the preliminary water treatment unit K5
	The replaceable module of the final water purification unit K7 is clogged	Replace the plug-in module of the final water treatment unit K7
	Closed connection tap	Open the connection tap
	Low inlet pressure	Install the boost pump on the whole apartment or separately on the water purifier Contact the after-sales service
Water from a tap of clean water flows slowly	The lifetime of a tank with replaceable backfilling has ended	For replacement or purchase, contact the after-sales service.
The water coming out is not softened	The lifetime of the tank with replaceable backfilling is ended	For replacement or purchase, contact the after-sales service.
	Damage to the internal device of the tank with replaceable backfill	For replacement or purchase, contact the after-sales service.

The coupon for the warranty repair of the water purifier Extra-Soft

Serial No.	
Date of sale	
Seller's stamp	
Seller's signature	

Warranty period - 1 year from the date of sale

Registration number of declaration of conformity:

EAC N RU Д – RU.HO03.B.0047

Date of registration of the declaration: July 19, 2018. Valid from the registration date on 18.07.2023, including.

The Declaration of Conformity is issued by LLC "Aquaboss", 197183, Russia, St. Petersburg, Sestroretskaya St., 3, lit. A, p.1H (г. Санкт-Петербург, ул. Сестрорецкая, д. 3, лит. А, пом.1H).

TU 3697-009-50056997-2010

Manufacturer: LLC "Aquaboss",
Russia, St. Petersburg, st. (Санкт-Петербург, ул.) Sestroretskaya,
3 (Сестрорецкая, д. 3) by order of LLC "Aquafor" 197110, Russia,
St. Petersburg, st. (Санкт-Петербург, ул.) Pionerskaya, 27
(Пионерская, д. 27), lit. A

Companies, performing installation, warranty and service
maintenance

Engineering centre of LLC "Aquaboss"

Russia, St. Petersburg, st. (Санкт-Петербург, ул.) Sestroretskaya, 3 (Сестрорецкая,
д. 3), tel. (812) 430-55-06

Russia, St. Petersburg, st. (Санкт-Петербург, ул.) Pionerskaya (Пионерская) 41, tel.
(812) 235-67-96

Your regional dealer

e-mail: aquaboss@mail.wplus.net
www.aquaboss.ru